

What is a Technology Platform?

Technology Platforms (TPs) are a means of defining R&D priorities in areas of strategic importance for Europe. They focus on areas of significant economic impact and high societal relevance where there is high public interest and scope for genuine value added through a European-level response.

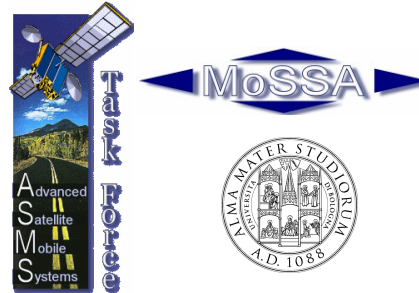
Key activities of a TP are to

- bring together all relevant stakeholders, including the final users
- identify a common **Strategic Vision**
- develop, and then implement a **Strategic Research Agenda**, in synergy with the FP7 workprogramme

More on TPs can be found at:

<http://www.cordis.lu/technology-platforms/home.html>

Supported by



Under the auspices of

- European Commission
- European Space Agency

ISI provisional timetable

- 19 July:** ISI starting meeting (Brussels)
- 20 July:** Start work on Strategic Vision doc
- End July:** Open a call for Expressions of Interest in ISI
- September:** Start work on Strategic Research Agenda
- 23 September:** ASMS/MoSSA Standardization meeting (Brussels)
- 29 September:** Full day meeting of ISI, at Telespazio, in Rome (Strategic Vision document and governance structure for approval)
- October:** Meet formally with European Commission and ESA
- End of October:** Launch ISI

Contacts

Prof. Giovanni E. Corazza
ASMS-TF Chairman
isi-info@deis.unibo.it



The Integral Satcom Initiative



**Merging Mobile, Broadcasting,
and Broadband
Satellite Communications
within the
*European Information Space!***

What is ISI?

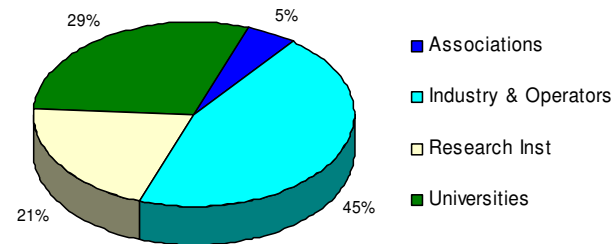
ISI is an industry-led forum designed to bring together for the first time all research and technology aspects related to **satellite communications**, including **mobile**, **broadband**, and **broadcasting** applications, as well as their future convergence.

The purpose is to foster and develop the entire industrial sector, maximize the value of European research and technology development, and contribute positively to EU policies.

ISI is intended to be part of the group of **Technology Platforms** which are now being defined in view of the preparation for the EC FP7.

ISI Constituency (as of September 13, 2005)

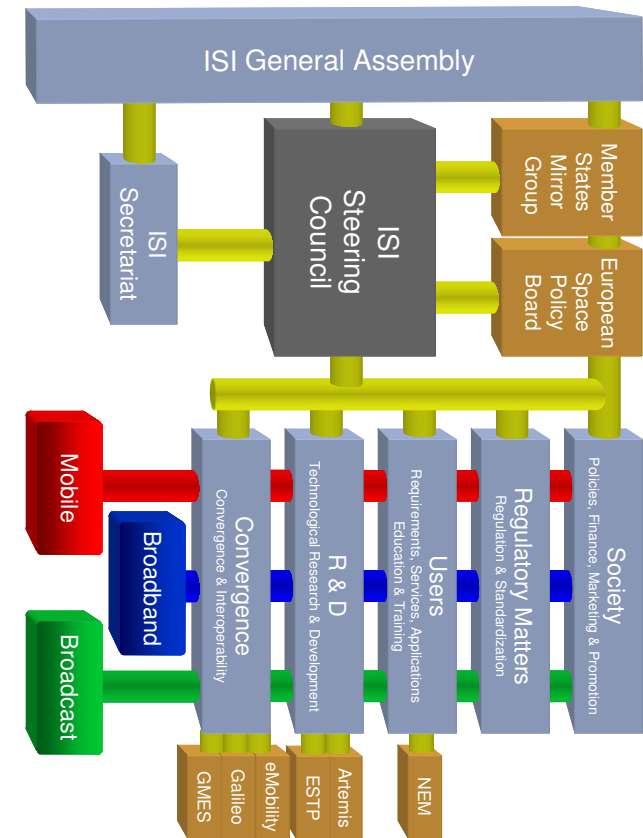
ISI Participation by Organization Type



ISI Participants are growing steadily. Presently, there are more than **75** institutions from **14** different Countries:

- Austria
- Belgium
- France
- Germany
- Greece
- Hungary
- Italy
- Luxemburg
- Norway
- Slovenia
- South Korea
- Spain
- Switzerland
- United Kingdom

ISI Governance Structure



How Can You Join ISI?

To *join* ISI follow instructions in
www.asms-tf.org